

THE ROSITA CREEK RANCH



A 7,268ACRE PROPERTY
MAVERICK COUNTY
EAGLE PASS, TX

- 7,268 acres
**MAVERICK COUNTY
TEXAS**
Stephen Stransky
Broker
210-254-7700

ROSITA CREEK RANCH

“I travel so much on stories,
so I don't take vacation much,
but one place I go back to
'Again and Again'
is my Ranch.”
- Bill Kurtis



Map holds no warranties express or implied
0 0.1 0.2 0.3 0.4 0.5 Miles

Compiled by

Real Estate GIS

About

The Rosita Creek Ranch is located in Maverick County and surrounded by road frontage on Hwy. 57, Hwy. 277, and Loop 480 overlooking Eagle Pass, Texas.

This 7,268 acre high-fenced ranch is a true sportsman's paradise today, but has the potential to be a great investment for future development given its proximity to the city.

- A 9,100 SF Main Lodge with city water
- Overlooks an approximate 250-acre lake
- Easily accessible with its own 6,200' paved runway and hangar
- Approximately 5 miles of interior paved roads throughout.
- The ranch is managed under MLDP Level III permit and has great whitetail deer with the high end annually scoring in the 180 range B/C.

The ranch has some blackbuck antelope along with other typical South Texas species. The 4 massive lakes provide great waterfowl hunting and fishing, with the biggest being approx. 250 acres. There are several dammed up tributaries that create great water throughout the ranch.

Asking \$14,536,000





~ 7,268 acres
MAVERICK COUNTY
TEXAS
Stephen Stransky
Broker
210-254-7700

Rosita Creek Ranch



Map holds no warranties express or implied
0 0.4 0.8 1.2 1.6 2 Mi.



Stephen Stransky - Broker - 210-254-7700

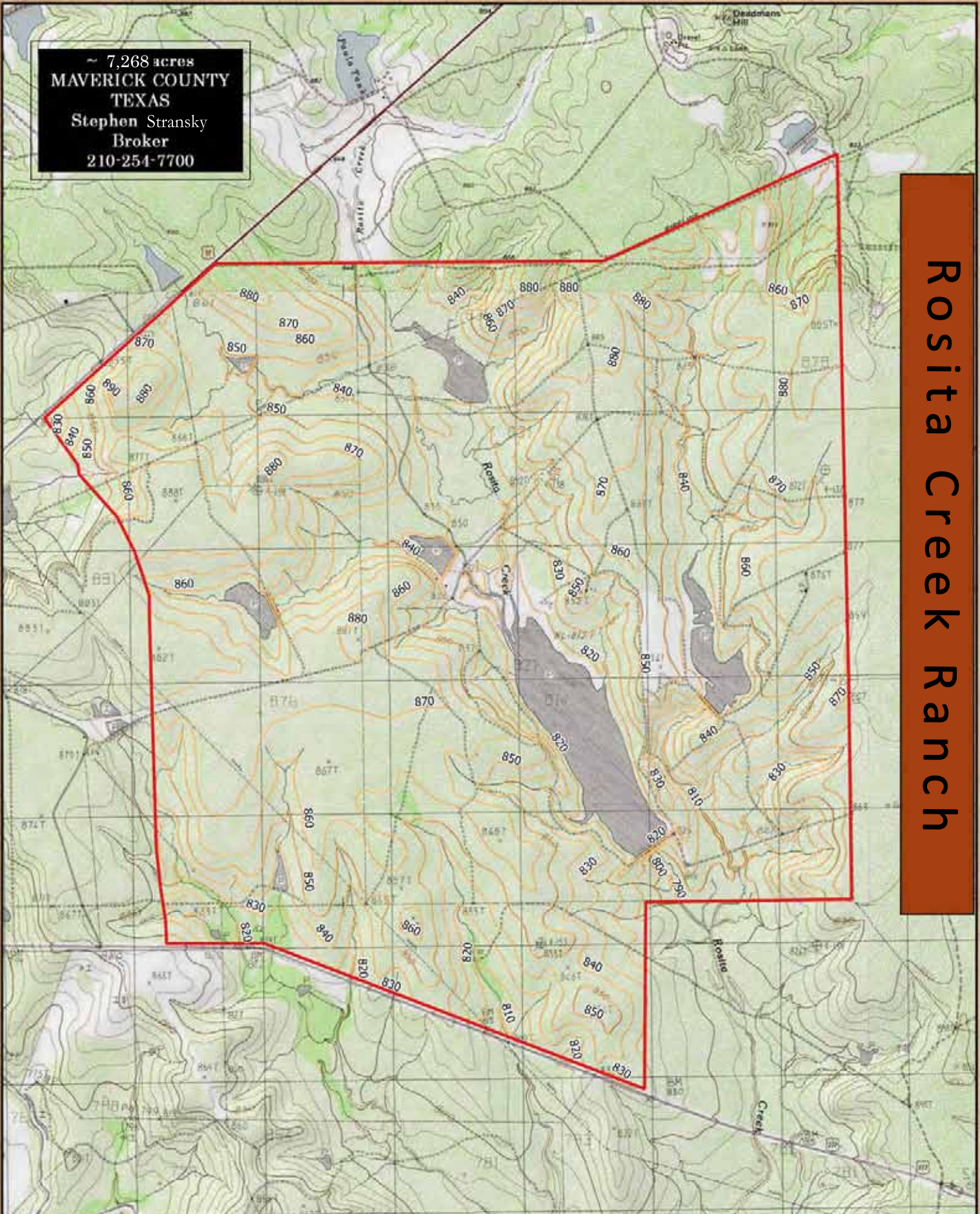
Compiled by



Real Estate GIS

~ 7,268 acres
MAVERICK COUNTY
TEXAS
Stephen Stransky
Broker
210-254-7700

Rosita Creek Ranch



Map holds no warranties express or implied
0 0.25 0.5 0.75 1 1.25 1.5 Mi.

Compiled by



Stephen Stransky - Broker - 210-254-7700



Real Estate GIS



**STRANSKY
PROPERTIES**

