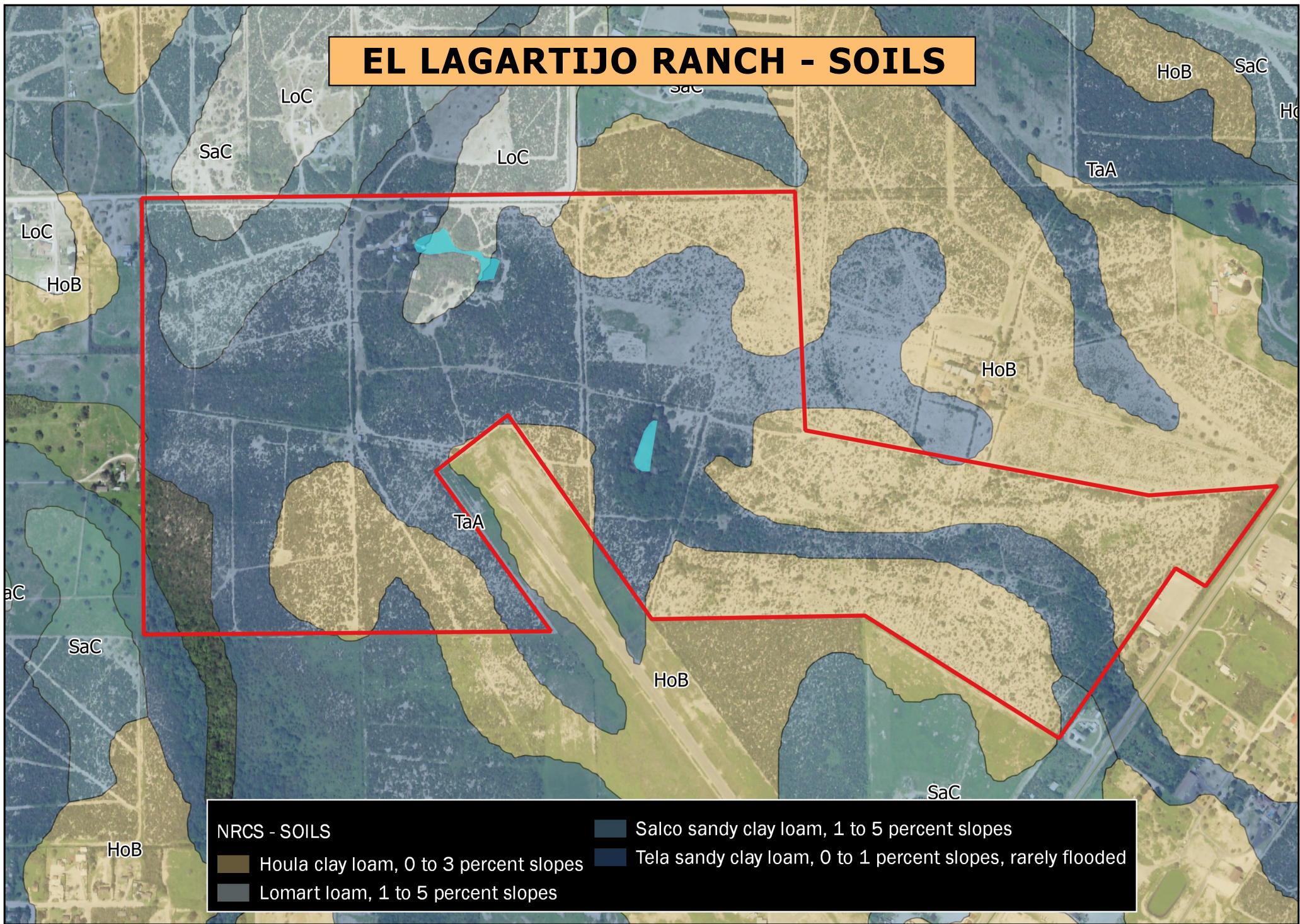


# EL LAGARTIJO RANCH - SOILS



**NRCS - SOILS**

- Salco sandy clay loam, 1 to 5 percent slopes
- Houla clay loam, 0 to 3 percent slopes
- Lomart loam, 1 to 5 percent slopes
- Tela sandy clay loam, 0 to 1 percent slopes, rarely flooded



STEPHEN STRANSKY  
210-254-7700  
stephen@stranskyproperties.com