

HERRADURA EAST RANCH

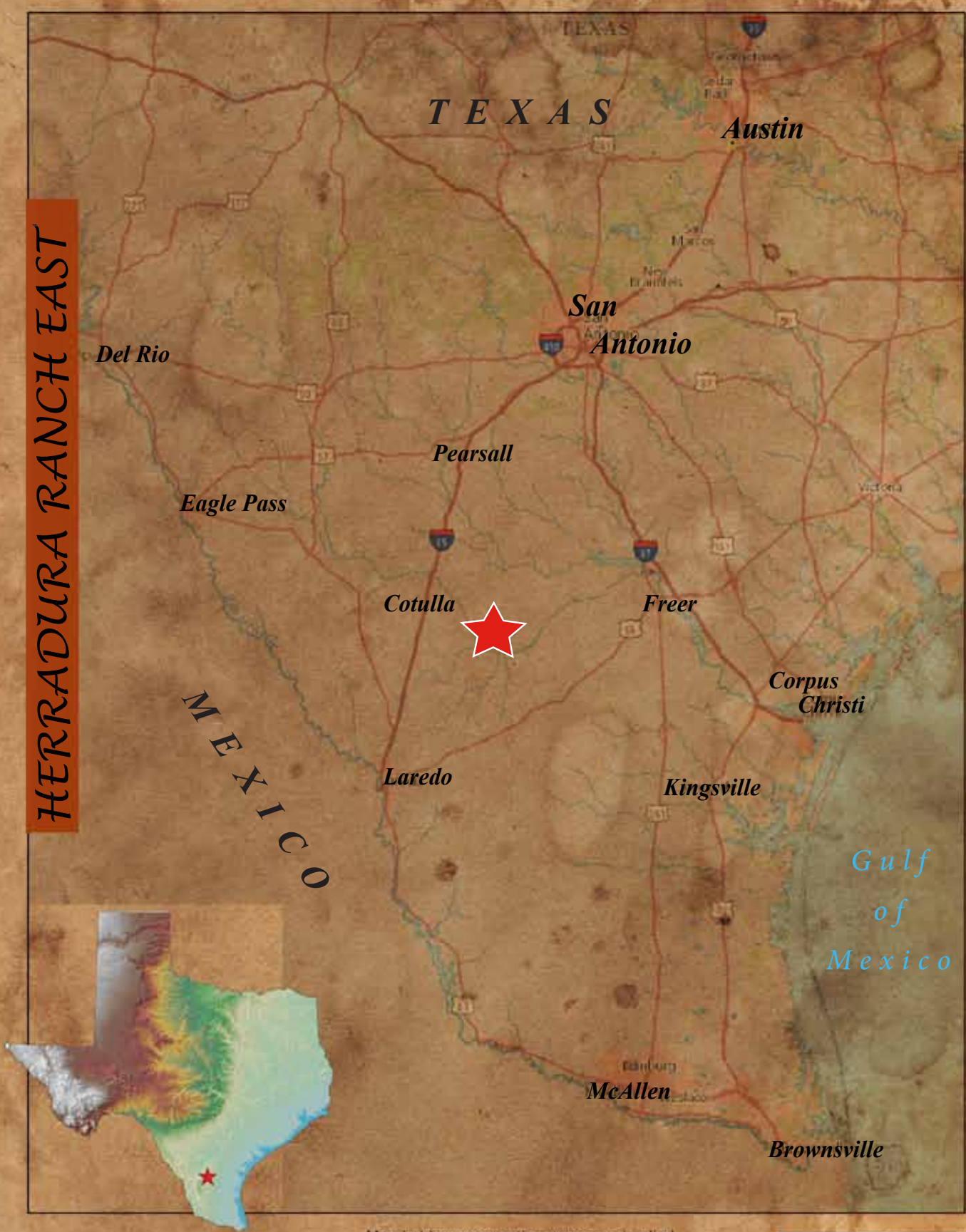
~2,642 ACRES
La Salle County
Cotulla, Texas





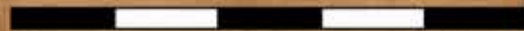
The Herradura Ranch East is a turnkey standalone pasture of the well known www.Herraduraranch.com. This ranch has several great aspects and amenities which include an extremely well managed MLD level III deer herd producing several trophy deer year after year. There are 3-5 acre food plots and a 12 acre DMP pen to help support and manage the herd. It also has great surface water with 8 tanks and Horseshoe creek traversing the ranch and great subsurface water with a 4,000' water well capable of producing approx. 143 GPM. It fronts on FM 624 with 2.8 miles of paved road frontage and good roads throughout the interior. There is piped water to 16 low level water stations perfect for the abundant blue and bobwhite quail. The ranch will also convey with a 3 BR 2 Bath home and 10 blinds and feeders. Asking price is \$6.1 million.

HERRADURA RANCH EAST



Map holds no warranties express or implied

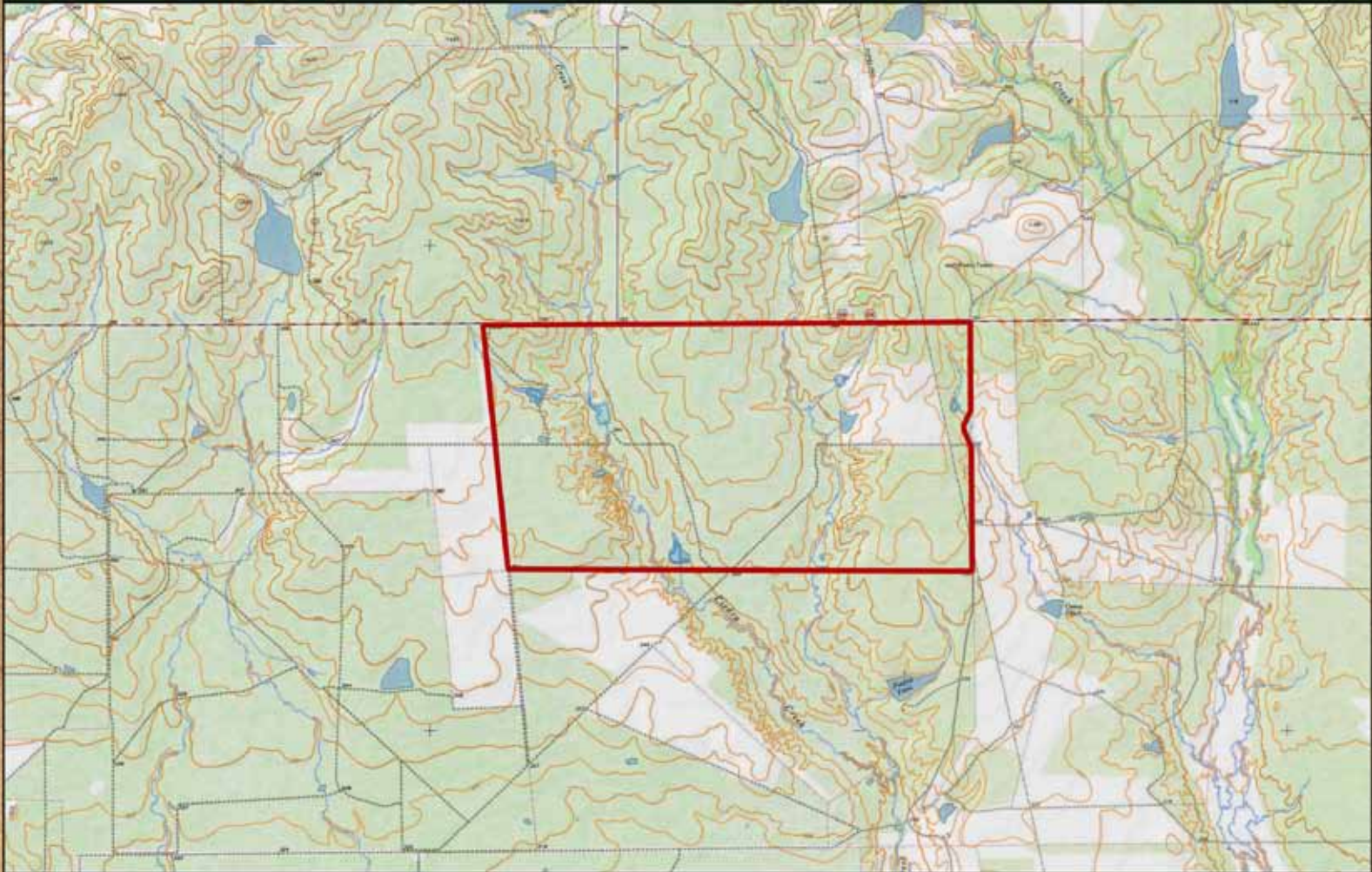
0 20 40 60 80 100 Miles



Jon Busbee - Broker - 210-218-6114

HERRADURA RANCH EAST
~2,642 acres La Salle County, TX

Stephen Stransky - Broker - 210-254-7700



0.5 0 0.5 1 1.5 2 MILES



Map holds no warranties, express or implied.







0 2000 4000 6000 8000 10000 ft

Map holds no warranties, express or implied.

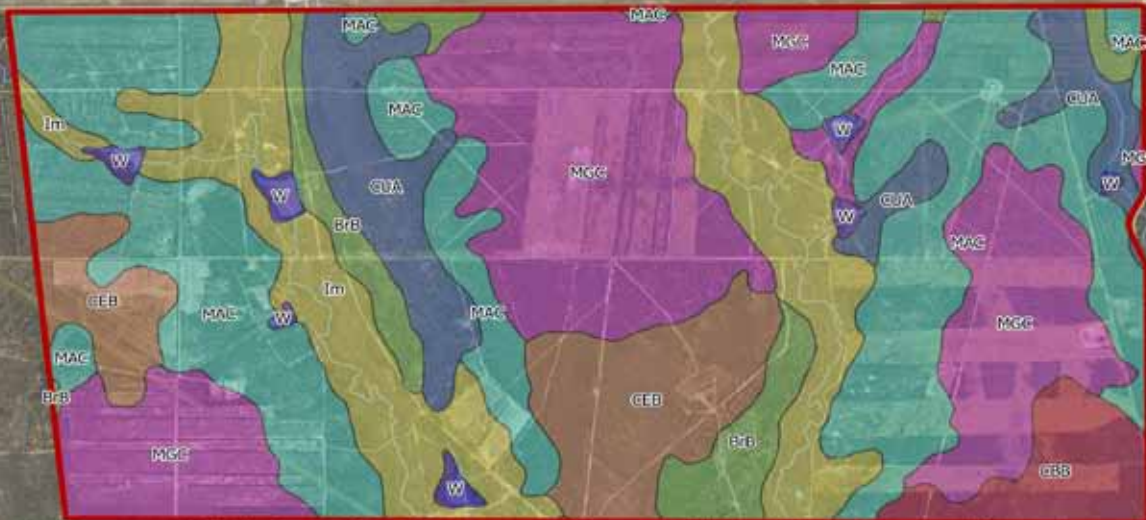




Jon Busbee - Broker - 210-218-6114

HERRADURA RANCH EAST
~2,642 acres La Salle County, TX

Stephen Stransky - Broker - 210-254-7700



NRCS SOILS

- | | |
|--|---|
| Brb - BRUNDAGE VERY FINE SANDY LOAM, 0 TO 2 PERCENT SLOPES | Im - IMOGENE VERY FINE SANDY LOAM, OCCASIONALLY FLOODED |
| CBB - CAÑAL VERY FINE SANDY LOAM, GENTLY UNDULATING | MAC - MATA GRAVELLY SANDY CLAY LOAM, GENTLY UNDULATING |
| CEB - CHARCO-ALTITA COMPLEX, NEARLY LEVEL | MGC - MOGLIA CLAY LOAM, GENTLY UNDULATING |
| CUA - COTULLA CLAY, NEARLY LEVEL | W - WATER |

2000 0 2000 4000 6000 ft



Map holds no warranties, express or implied.





**STRANSKY
PROPERTIES**

