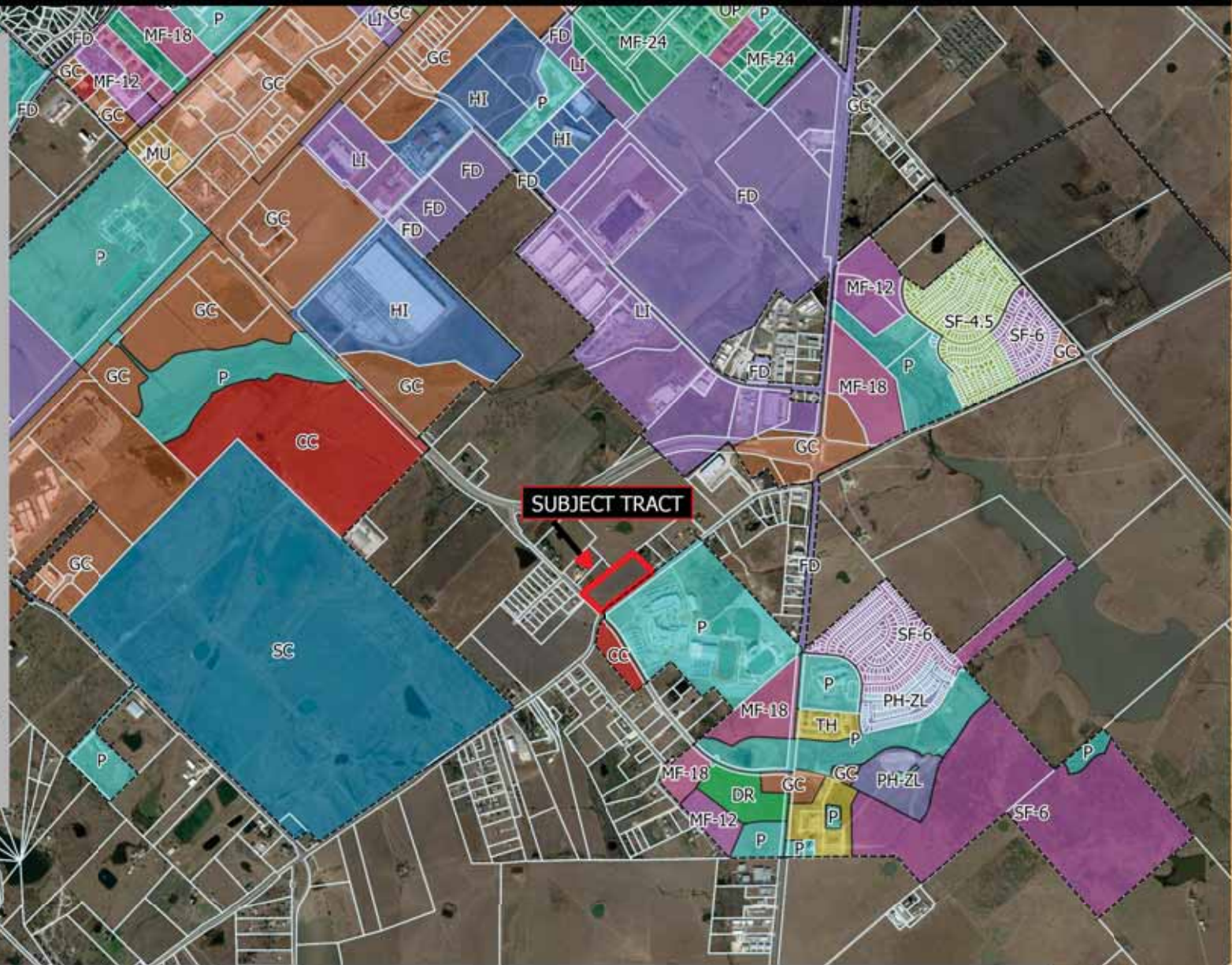


~9.97 acres

# Parcel Zoning Map

for sale

- CITY LIMIT**
- CITY ZONING**
- CC-Community Commercial
  - DR-Duplex Restricted
  - FD-Future Development
  - GC-General Comm.
  - HC-Heavy Comm.
  - HI-Heavy Ind.
  - LI-Light Ind.
  - Multi Fam.-12 units
  - Multi Fam.-18 units
  - Multi Fam.-24 units
  - MU-Mixed Use
  - NC-Neighborhood Comm.
  - OP- Office/Professional
  - P-Public/Institutional
  - PH-ZL Patio Home
  - SC-Smart Code District
  - SF-Single Fam. 4500 sq. ft. lots
  - SF-Single Fam. 6000 sq.ft. lots
  - TH-Townhouse Res.



**SUBJECT TRACT**

San Marcos, TX



All "Non-Zoned" Land is in the "ETJ" - City of San Marcos Extraterritorial Jurisdiction

Map holds no warranties, express or implied.

0.25 0 0.25 0.5 0.75 1 Miles

