

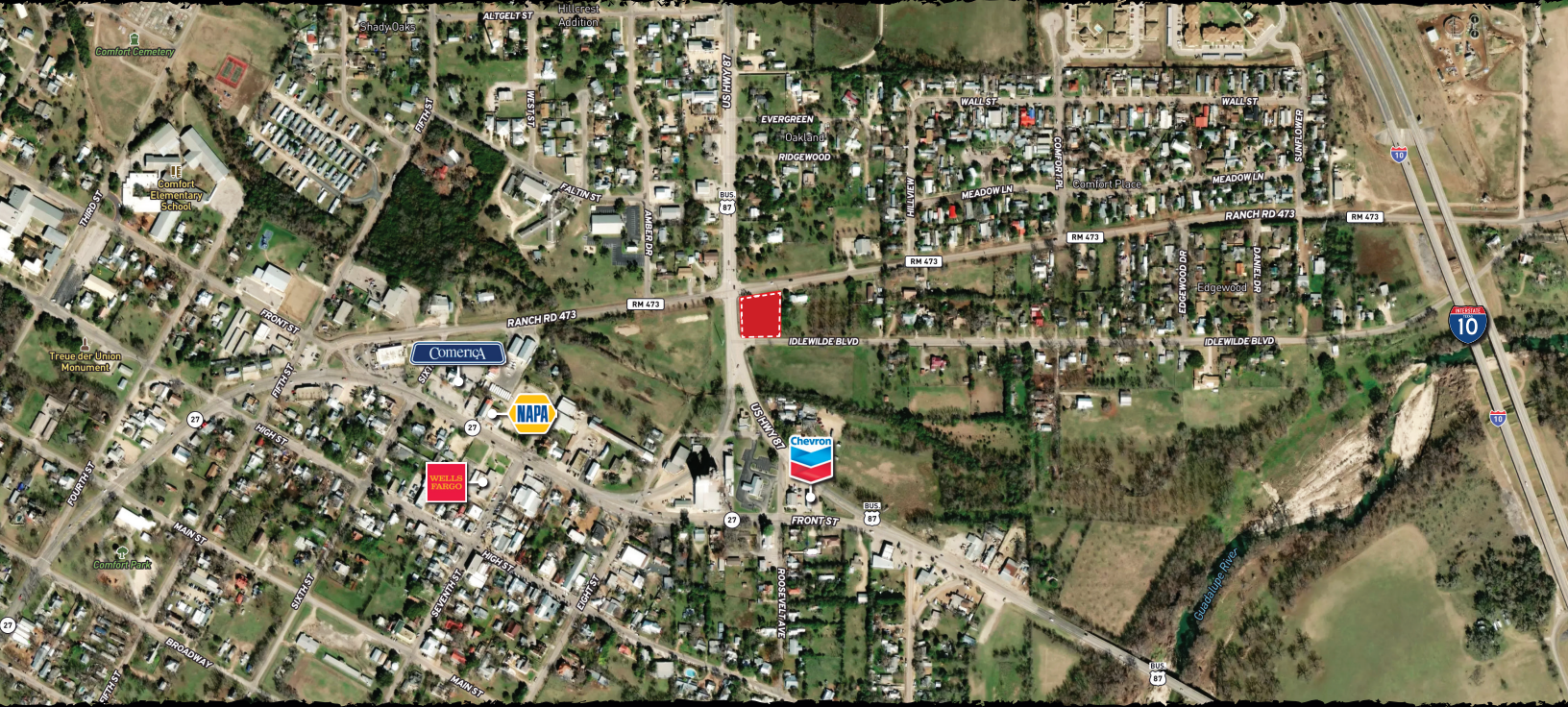
102 IDLEWILDE BLVD

Kendall County // Comfort, Texas



210.254.7700 // stephen@stranskyproperties.com // stranskyproperties.com

STRANSKY PROPERTIES: FARMS, RANCHES, COMMERCIAL REAL ESTATE AND DEVELOPMENT



Approximately 3/4 of an acre (32,887 sq. ft.) at a major red light intersection in Comfort, Texas with frontage on three sides.

FRONTAGE:

- » ±185' on Hwy. 87
- » ±200' on FM 473
- » ±180' on Idlewilde Blvd.

FLOOD PLAIN:

- » About 10% of this property lies within the 100 year flood plain along Idlewilde Blvd.

TAXES:

- » ±\$3,800 per year.

SEWER AND WATER:

- » Provided by Kendall County WCID #1

ASKING PRICE:

- » \$411,000 (\$12.50 psf.)

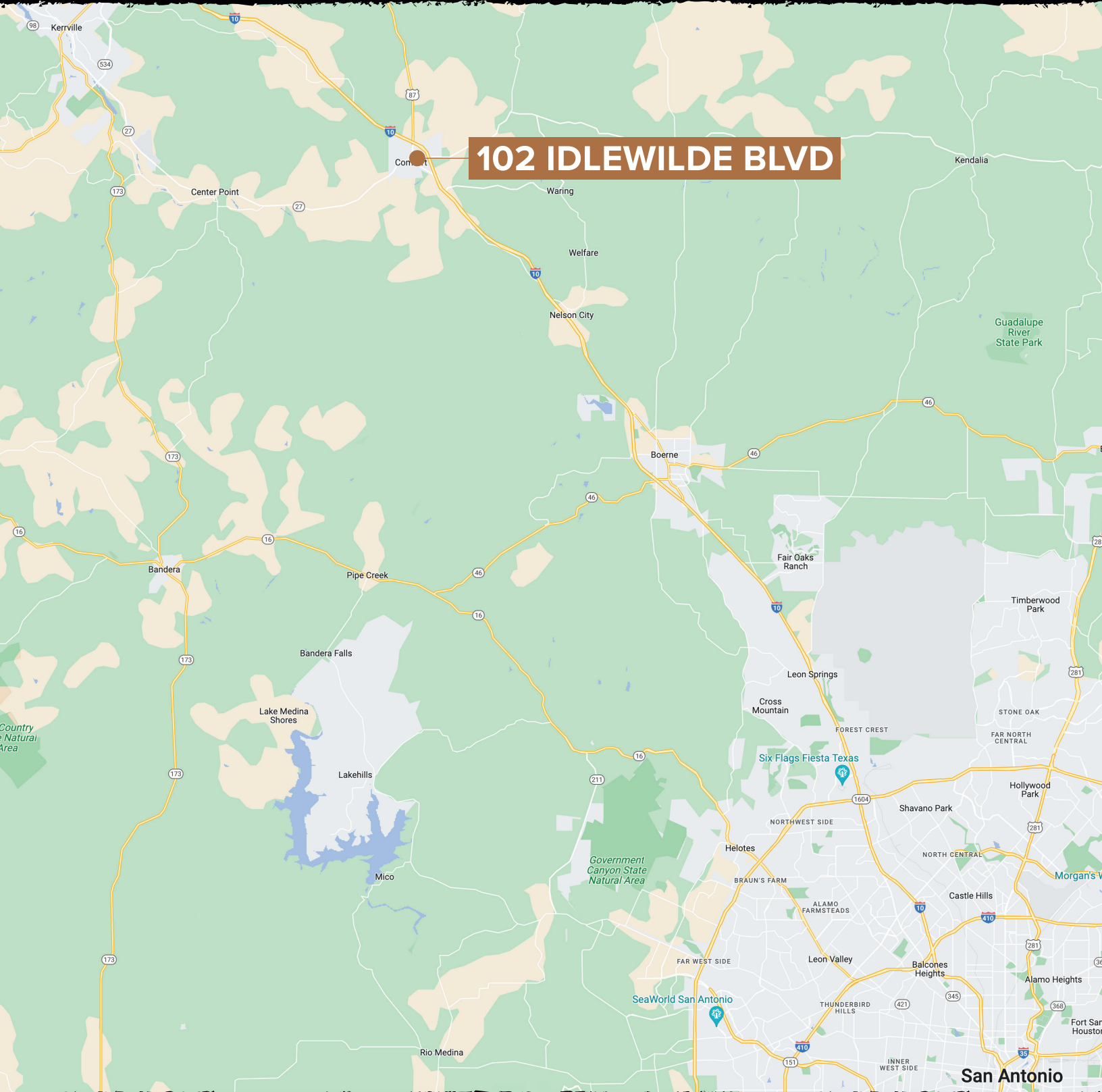
NO ZONING





STRANSKY PROPERTIES

STRANSKY PROPERTIES: FARMS, RANCHES, COMMERCIAL REAL ESTATE AND DEVELOPMENT



210.254.7700 // stephen@stranskyproperties.com // stranskyproperties.com

©2022 Stransky Properties. All rights reserved.