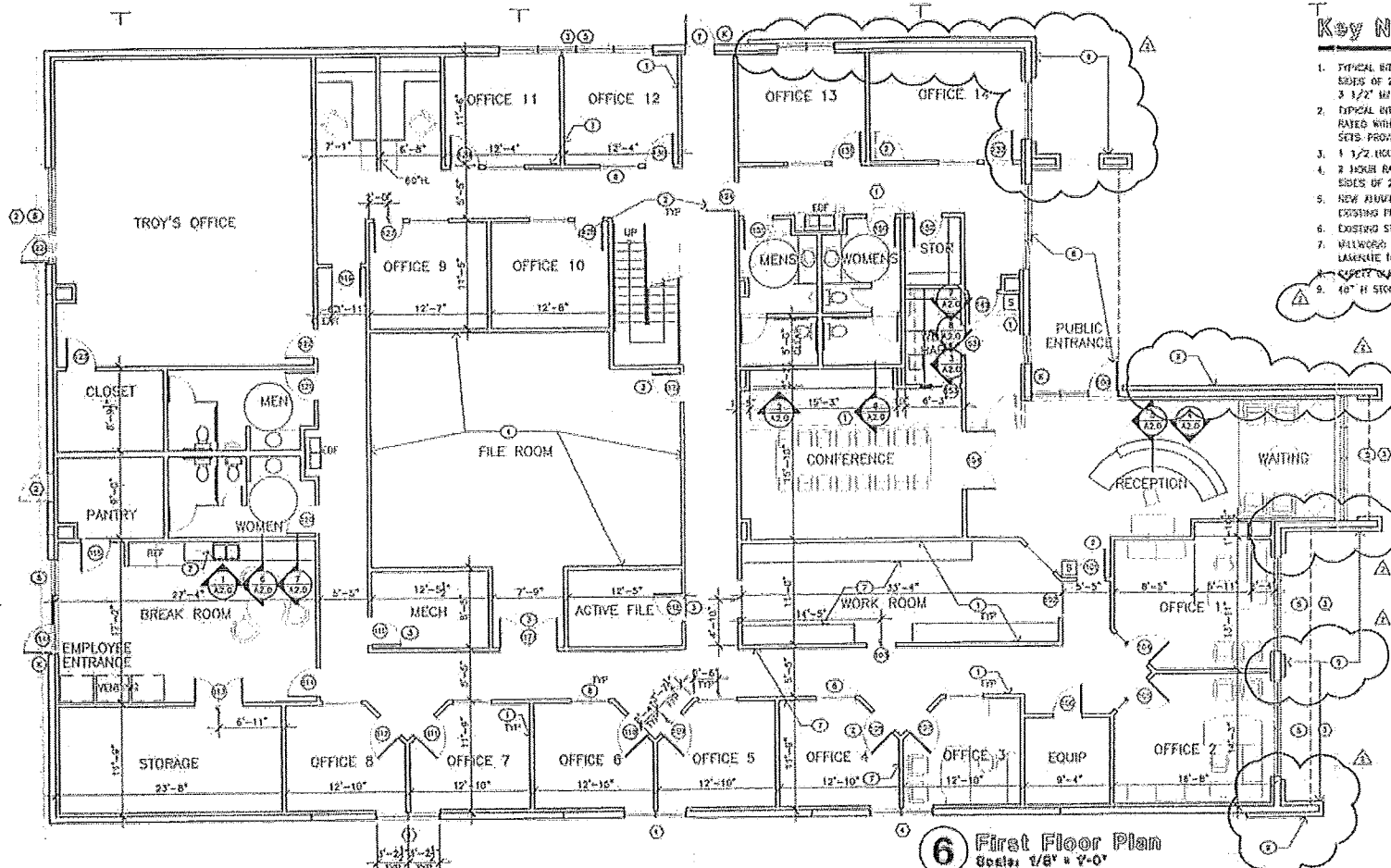
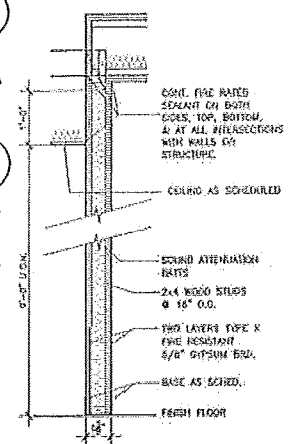


1 Mezzanine
Scale: 1/8" = 1'-0"



6 First Floor Plan
Scale: 1/8" = 1'-0"



8 Wall Section
Scale: 3/8" = 1'-0"

Key Notes

1. TYPICAL INTERIOR PARTITION: 1 LAYER 5/8" TYPE 'X' GYP. BOARD BOTH SIDES OF 2X4 STUDS AT 16" O.C.; BOTTOM PLATE TREATED. PROVIDE 3 1/2" MINERAL WOOL INSULATION BATT BETWEEN CEILING.
2. TYPICAL EXTERIOR DOOR: 3070 SOLID CORE WOOD DOOR; 20 MIN. RATED WITH WINDOOR VENER. 1 1/2" PIN SELF-CLOSING HITTER; LEVER SETS. PROVIDE KNOCKDOWN METAL FRAMES WITH 3 SLIDERS.
3. 1 1/2 HOUR 1" LABEL DOOR AND FRAME.
4. 2 HOUR RATED PARTITION: 2 LAYERS 5/8" TYPE 'X' GYP. BOARD BOTH SIDES OF 2X4 STUDS AT 16" O.C.
5. NEW ALUMINUM AND GLASS STOREFRONT IN EXISTING OPENING TO MATCH EXISTING PROFILE AND FINISH.
6. EXISTING STOREFRONT AND ENTRY TO REMAIN.
7. MILLWORK: 24" O. BASE CAB WITH 12" O. WALL CABINETS; PLASTIC LAMINATE TOPS, EDGES, AND SPLASH.
8. VENEER GLASS IN 12" O. 6" ALUMINUM FRAME.
9. 40" H STONE WINDOOR.

**Eckard Companies
Corporate Offices**

28816 St-to West
Ft. Oaks, Texas 78008

PROJECT NO. 200501
DATE 5/2/05

Floor Plans
RCP
Elevations

SHEET NUMBER
A1.0